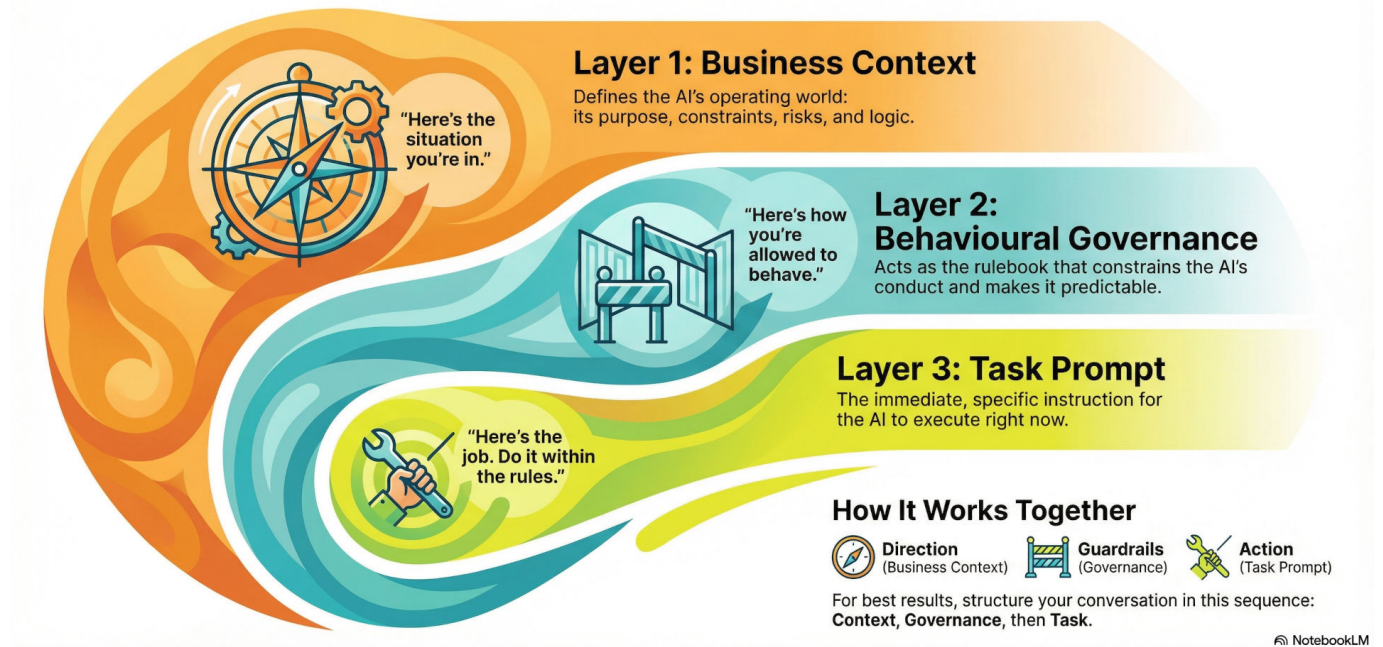


The Three-Layer Model of AI Context

The 3-Layer Model for Effective AI Context



1. Business Context

This defines the world the AI is operating in: the purpose of the work, the constraints of the business, the risks, the actors, and the operational logic. It anchors the model so it isn't improvising a universe of its own.

Think of it as: *"Here's the situation you're in."*

2. Behavioural Governance Layer

This is the rulebook that constrains the model's conduct. It dictates what the AI may and may not do, how it handles uncertainty, and how it responds when information is incomplete or ambiguous.

Its job is to make behaviour predictable, safe, and aligned with your intent.

Think of it as: *"Here's how you're allowed to behave."*

3. Task Prompt

This is the immediate instruction: extract a booking, draft a message, summarise notes. It operates inside the constraints defined by the governance layer and the logic defined by the

business context.

Think of it as: *"Here's the job. Do it within the rules."*

How They Relate

- The **business context** gives direction and meaning.
- The **governance layer** sets the guardrails that keep the model honest.
- The **task prompt** tells it what to do right now.

They're all in the same conversation window, but separating them conceptually keeps the system stable. A small enterprise owner only needs to grasp that the AI works best when you tell it the world it's in, the rules it must obey, and the specific task—*in that order*.